

The Mulberry

3 bedroom
semi-detached &
mid-terrace home

The interior layout of this delightful 3 bedroom home is inspired by a traditional cottage, revitalized to form a spacious and contemporary family home, brimming with charm.

Computer generated images are for illustrative purposes only individual features may vary from one plot to another and do not form any part of the contract or warranty.

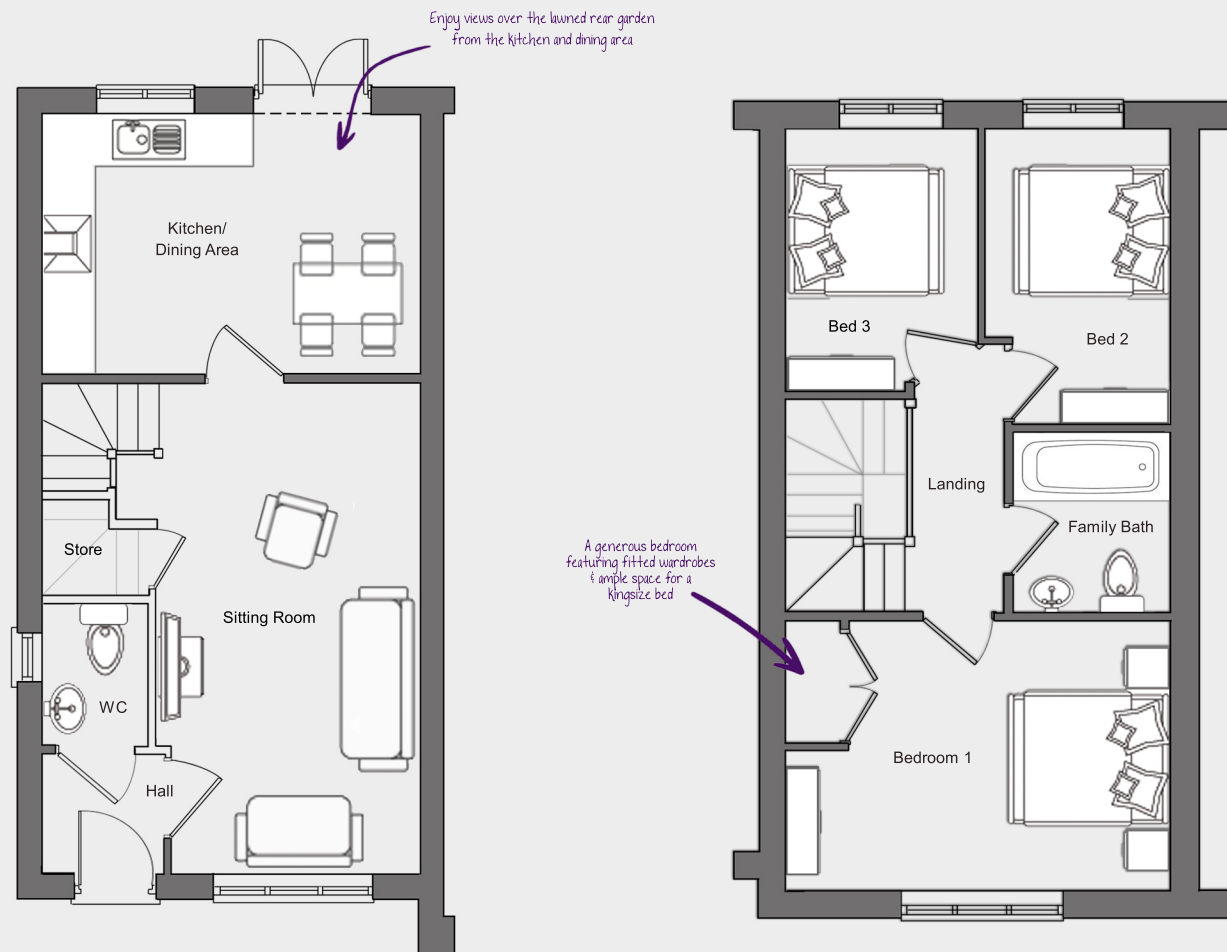


*Computer-generated images may not be to scale and are for indicative purposes only. Finishes and materials are plot dependent and may vary. Landscaping is illustrative only. Please speak to your Sales Executive to confirm specific details.

The Mulberry

3 bedroom semi-detached & mid-terrace home

Combining the flair and functionality of contemporary architecture with the quality and elegance of period properties, the moment you step over the threshold of one of our homes, you'll notice the difference.



Ground Floor	Millimeters	Feet & Inches
Living Room, Dining Area	5570 x 2800	18'3" x 9'2"
Kitchen / Dining Area	2960 x 4280	9'9" x 14'1"
Powder Room	1610 x 1200	5'3" x 3'11"

First Floor	Millimeters	Feet & Inches
Bedroom 1 (Master)	3600 x 4280	11'10" x 14'1"
Bedroom 2	2960 x 2130	9'9" x 6'11"
Bedroom 3	3260 x 2050	10'8" x 6'9"
Family Bathroom	2030 x 1760	6'8" x 5'9"